

## New ConTex Container Ship Time Charter Assessment Index

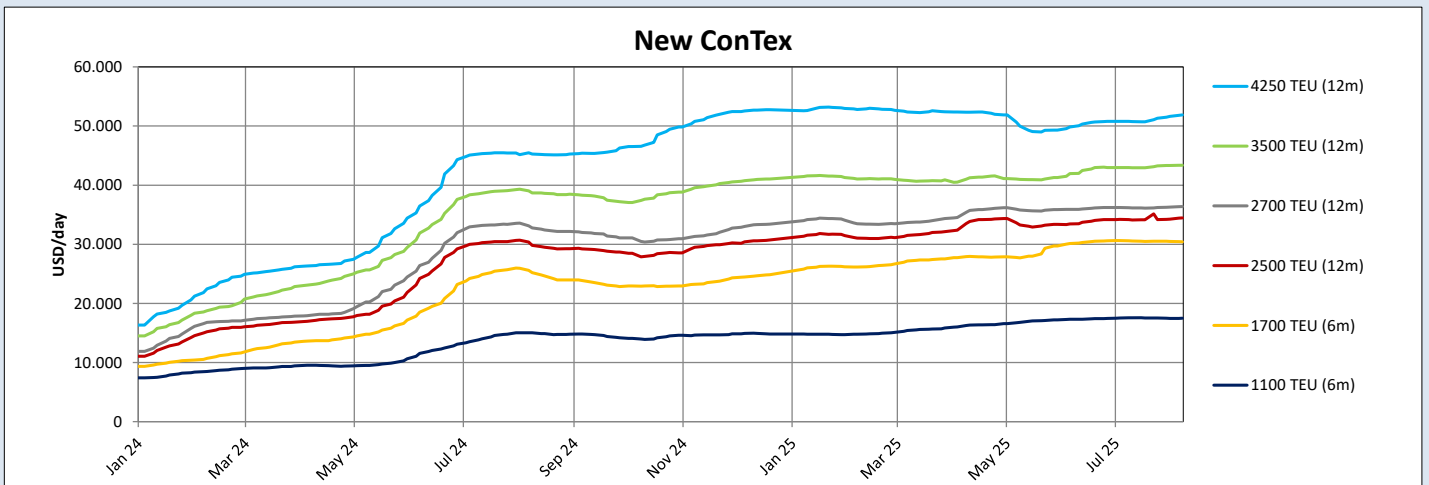
New ConTex*		1536	
07.08.25		6 mos	12 mos
Geared	1100 TEU	\$17.505	n.a.
	1700 TEU	\$30.420	
	2500 TEU		
Gearless	2700 TEU	n.a.	\$34.448
	3500 TEU		\$36.377
	4250 TEU		\$43.360
			\$51.865

Legend		
↑	up	+ 2% or more
↗	steady up	from +1% to +1,9%
→	steady	+/- 1 %
↘	steady down	from -1% to -1,9%
↓	down	- 2% or less

\*New ConTex evaluation is EXCLUDING 1800 TEU for 6 months period, 1100/1700/5700/6500 TEU groups for 12 months period & 2500/2700/3500/4250 TEU groups for 24 months period

New ConTex-Commentary - issued:	07.08.25
<p>Yet another so called slack summer week has passed, however fixtures are still being made mostly discrete and selectively behind curtains.</p> <p>Levels across all segments remain firm and healthy for rates and periods fetched. Forward fixtures can be observed by various bigger operators even - undelying a possible fear that open tonnage could possibly end up with a competitor either way - via a charter or even bought away from the TC market for good. The outlook remains positive with no signs of easing all over the world and the pure non availability of tramp owned tonnage.</p> <p>The New ConTex follows the overall market moving sideways more or less with little periodical decrease on feeders view rather low activity of transaction observed.</p>	

New ConTex Development														
Vessel type	Evaluated Period	Today	Week-on-Week				Month-on-Month			Year-on-Year				
		07.08.25	31.07.25	Change	Change	08.07.25	Change	Change	08.08.24	Change	Change			
New ConTex*		1536	1532	4	➡	0,3%	1526	10	➡	0,7%	1337	199	⬆	14,9%
1100 TEU	6 mos	\$17.505	\$17.461	\$44	➡	0,3%	\$17.566	-\$61	➡	-0,3%	\$15.025	\$2.480	⬆	16,5%
	12 mos	\$16.561	\$16.452	\$109	➡	0,7%	\$16.541	\$20	➡	0,1%	\$13.841	\$2.720	⬆	19,7%
1700 TEU	6 mos	\$30.420	\$30.477	-\$57	➡	-0,2%	\$30.577	-\$157	➡	-0,5%	\$25.191	\$5.229	⬆	20,8%
	12 mos	\$26.698	\$26.584	\$114	➡	0,4%	\$26.791	-\$93	➡	-0,3%	\$21.409	\$5.289	⬆	24,7%
1800 TEU	6 mos	\$34.400	\$33.998	\$402	↗	1,2%	\$33.893	\$507	↗	1,5%	\$31.273	\$3.127	⬆	10,0%
2500 TEU	12 mos	\$34.448	\$34.230	\$218	➡	0,6%	\$34.175	\$273	➡	0,8%	\$29.823	\$4.625	⬆	15,5%
	24 mos	\$26.743	\$26.650	\$93	➡	0,3%	\$26.402	\$341	↗	1,3%	\$24.468	\$2.275	⬆	9,3%
2700 TEU	12 mos	\$36.377	\$36.289	\$88	➡	0,2%	\$36.189	\$188	➡	0,5%	\$32.755	\$3.622	⬆	11,1%
	24 mos	\$28.100	\$28.009	\$91	➡	0,3%	\$27.818	\$282	↗	1,0%	\$26.964	\$1.136	⬆	4,2%
3500 TEU	12 mos	\$43.360	\$43.340	\$20	➡	0,0%	\$42.980	\$380	➡	0,9%	\$38.695	\$4.665	⬆	12,1%
	24 mos	\$33.720	\$33.525	\$195	➡	0,6%	\$32.925	\$795	⬆	2,4%	\$33.030	\$690	⬆	2,1%
4250 TEU	12 mos	\$51.865	\$51.625	\$240	➡	0,5%	\$50.785	\$1.080	⬆	2,1%	\$45.260	\$6.605	⬆	14,6%
	24 mos	\$42.713	\$42.330	\$383	➡	0,9%	\$40.993	\$1.720	⬆	4,2%	\$36.205	\$6.508	⬆	18,0%
5700 TEU	12 mos	\$59.997	\$59.844	\$153	➡	0,3%	\$59.858	\$139	➡	0,2%	\$56.833	\$3.164	⬆	5,6%
6500 TEU	12 mos	\$66.289	\$66.200	\$89	➡	0,1%	\$66.211	\$78	➡	0,1%	\$63.778	\$2.511	⬆	3,9%



**Disclaimer**

The brand NewConTex is copyrighted by Verband Hamburger und Bremer Schiffsmakler e.V. ("VHBS e.V.") and is protected by law. The NewConTex may be published only with the source reference © VHBS e.V. It is distributed to the general public for information purposes only and cannot be relied upon as a trading recommendation and does not constitute a solicitation to trade. The reported information is obtained from market sources. While every effort has been made to ensure the accuracy and the completeness of the NewConTex, VHBS e.V. makes no representations, conditions or warranties of any kind, express or implied, about the completeness, accuracy, reliability, or suitability of the NewConTex. Any reliance you place on the NewConTex is therefore strictly at your own risk. Neither VHBS e.V. nor any of its subsidiaries or affiliates nor any employee of the foregoing shall be liable or have any responsibility for any loss, liability or damage, cost or expense including without limitation, indirect or consequential loss or damage, or any loss or damage whatsoever arising from loss of data or profits arising out of, or in connection with, the use of and the reliance on the NewConTex, save for death or personal injury arising from VHBS e.V. negligence and fraudulent misrepresentation that cannot, under German law, be excluded.